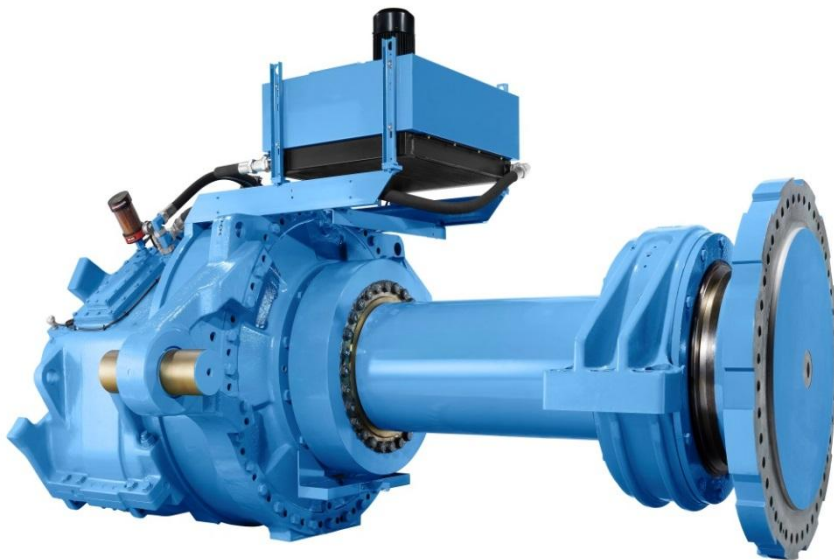


winergy Factory Training



winergy Customer & Vendors

winergy maintains a highly skilled staff of competent, trained technicians and gearbox specialist for the purpose of maintenance and repair of **winergy** products. The **winergy** Factory Training Program offers exclusive technical training to preferred **winergy** Vendors and Customers to improve their strengths, abilities and skills in maintenance and repair of **winergy** gearboxes.



The right training for everyone

winergy Factory Training Program features a variety of Training Modules designed to meet a customer's request for Skilled Maintenance, Up Tower Repair, or Failure Analysis

Target audience	Prerequisites	Module Profile	Objectives	Completion
-----------------	---------------	----------------	------------	------------

The Basic Module is designed for Companies who maintenance, provide services, or inspect **winergy** Gearbox.

Personnel type
 Engineers
 Maintenance Technician
 Field Service Technician

Winergy Vendor or Customer business relationship with **winergy**.

This module provides the knowledge and skills identified personnel require for familiarization of a **winergy** Gearbox as well as hands on Borescoping exercises.

- Upon Completion of this module, the trainee shall be capable to
- Understand the configuration of a **winergy** Gearbox
 - Identify components
 - Properly handle and maintain Borescope equipment
 - Know the HOW and WHYs to performing a Gearbox Borescope
 - Identify and evaluate component failures
 - Properly report and document findings
 - Borescope all accessible gears, pinions, and bearings

Each Trainee will be required to pass a written and Practical (Hands On) test.

Upon successful completion, each trainee will receive a **winergy** Basic Module Record of Completion.



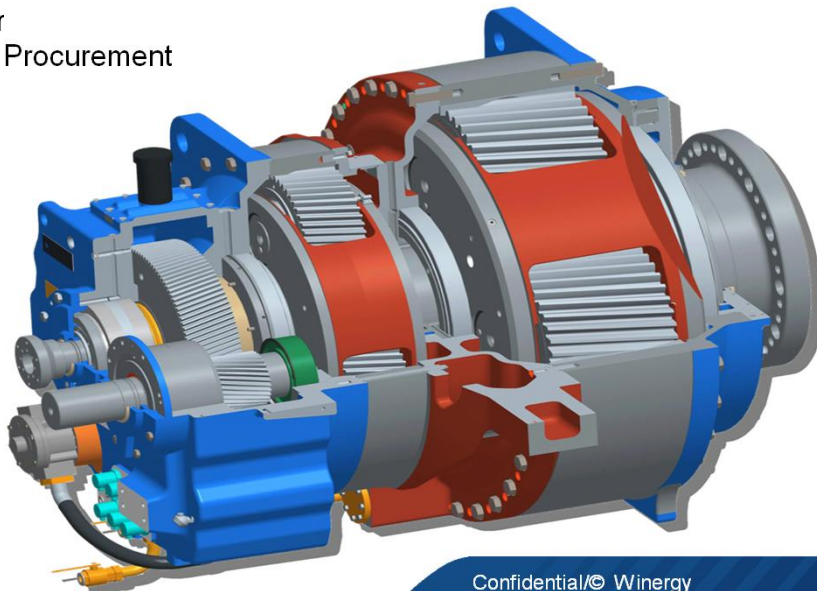
Participants	Min: 4 Max: 6
Additional Requirements	1 Borescope per 2 trainees (<4mm Tips required)
Duration	24 Hours
Cost	\$1,625 Per Trainee

winergy Factory Training Program



Overview	Basic	Standard	Advanced	Field
----------	-------	-----------------	----------	-------

Target audience	Prerequisites	Module Profile	Objectives	Completion
<p>The Standard Module is designed for Companies who either Own or provide maintenance/field services to winergy Gearbox Owners.</p> <p><u>Personnel type</u> Maintenance Technician Field Service Technician</p> <p><u>Optional Observers</u> Field/Operations Manager Sales or Procurement</p>	<p>winergy Vendor or Customer business relationship with winergy.</p>	<p>This module introduces the identified personnel to the high standards in quality, service, and repair required for performing winergy up tower repair solutions. The Basic Module curriculum is also included in the Standard Module.</p>	<p>Upon Completion of this module, the trainee shall be capable to</p> <ul style="list-style-type: none"> • Utilize standard and specialty tooling • High Speed Bearing Exchange • High Speed Pinion Exchange • Intermediate bearing Exchange • Intermediate Pinion Exchange • winergy Reporting and Documentation Processes 	<p>Each Trainee will be required to pass a written and Practical (Hands On) test.</p> <p>Upon successful completion of the factory training each trainee will receive a winergy Standard Module Record of Completion as well as meets prerequisites for continuous training modules (Advanced and Field).</p>



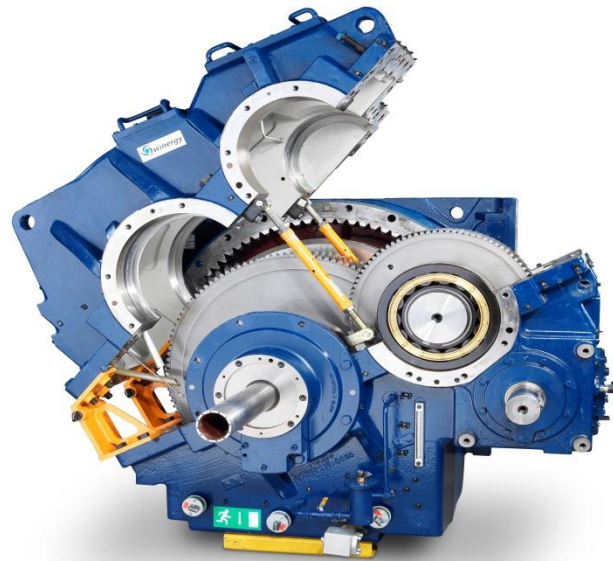
Participants	Min: 4 Max: 6 (2 Observers)
Additional Requirements	1 Borescope per 2 trainees (<4mm Tips required) Standard Tool Kit
Duration	64 Hours
Cost	\$5,625 per Trainee

winergy Factory Training Program



Overview	Basic	Standard	Advanced	Field
----------	-------	----------	----------	-------

Target audience	Prerequisites	Module Profile	Objectives	Completion
<p>The Advanced Module is designed for Companies who either Own or provide maintenance/field services to winergy Gearbox Owners.</p> <p><u>Personnel type</u> Maintenance Technician Field Service Technician</p>	<p>winergy Vendor or Customer business relationship with winergy and have successfully completed the Standard Module.</p>	<p>This module is a “Fast Track” agenda that delivers must-know procedures for performing up tower repair solutions on a single gearbox type.</p>	<p>Upon Completion of this module, the trainee shall be capable of performing all applicable up tower repair solutions available for the specific gearbox type as well as the set up and functionality of all Specialty tool kits.</p>	<p>Each Trainee will be required to pass a written and Practical (Hands On) test.</p> <p>Upon successful completion, and 2 successful field repairs observed by Winergy, each trainee will receive a winergy Advanced Module Record of Completion.</p>



Participants	Min: 2 Max: 4
Additional Requirements	winergy Standard Tool Kit
Duration	40 Hours
Cost	\$2,800 per Trainee

winergy Factory Training Program



Overview	Basic	Standard	Advanced	Field
----------	-------	----------	----------	-------

Target audience	Prerequisites	Module Profile	Objectives	Completion
-----------------	---------------	----------------	------------	------------

Field Training is available for Companies who either Own or provide maintenance/field services to **winergy** Gearbox Owners.

Personnel type
Maintenance Technician
Field Service Technician

winergy Vendor or Customer business relationship with **winergy** and have successfully completed the Standard Module.

This module provides the knowledge and skills identified personnel require for performing up tower repair solutions on **winergy** Gearbox as well as performing **winergy** Warranty Services.

- Upon Completion of this module, the trainee shall be capable to
- Understand the configuration of a **winergy** Gearbox
 - Identify internal components
 - Properly handle and maintain Borescope equipment
 - Know the HOW an WHYs to performing a Gearbox Borescope
 - Identify and evaluate component failures
 - Properly report and document findings
 - Borescope all accessible gears, pinions, and bearings

Upon successful completion, each trainee will receive one count towards the minimum two successful field repairs required for an Advanced Module Record of Completion.



Participants	Min: 2 Max: 4
Additional Requirements	winergy Standard Tool Kit
Duration	TBD
Cost	Hourly Rate & Travel and Expenses for Trainer



Winergy Drive Systems Corporation

1401 Madeline Lane
Elgin IL, 60124
U.S.A

Telephone +1 (847) 531-7400
winergyNA@winergy-group.com
www.winergy-group.com

